



# BAT METALWORK

Wall  
Ties



Straps  
Hangers

Nails

Plastic

Wire



## PRODUCT CATALOGUE 2023

Manufacturers & Suppliers of Building Products  
& Accessories for the Construction Industry

BAT  
LIMIT ANGLE  
LENGTH 750

# **BAT METALWORK**



BAT Metalwork Ltd was formed in October 1980 and is the leading Irish distributor of construction products to builder providers and DIY stores across the country

Since its inception BAT Metalwork has established itself as the leading supplier of carpenters metalwork and general building products with total emphasis on quality assurance and an excellent distribution network throughout the country, which guarantees a 24-hour delivery service. This is supported by a full technical backup service together with on-site training to suit our customers needs.

BAT Metalwork currently deals with the majority of builder's providers and DIY stores throughout the country.

BAT Metalwork realise the pressures & challenges our customers experience on a daily basis such as project deadlines, budgetary constraints & stock management issues. Our dedicated and highly experienced team of personnel are 100% committed to sustain the highest level of customer service to ensure we meet your requirements in a timely and efficient manner.

**General Manager:  
Patrick Dorgan**

T: +353 86 1409828  
E: [pdorgan@batmetalwork.com](mailto:pdorgan@batmetalwork.com)

**Sales Office:**

Breda O'Brien  
E: [breda.obrien@batmetalwork.com](mailto:breda.obrien@batmetalwork.com)

Adam Kennedy  
T: +353 86 1364403  
E: [akennedy@batmetalwork.com](mailto:akennedy@batmetalwork.com)

Galtee Valley Enterprise Park, Ballylanders, Co. Limerick, V35 F254

T: +353 62 46290

E: [info@batmetalwork.com](mailto:info@batmetalwork.com)

**[www.batmetalwork.com](http://www.batmetalwork.com)**

# Contents

	Wall Ties	2
	Hangers & Straps	6
	Wire & Fencing	12
	Landscaping	16
	Nails	20
	Plastic Products	26
	Lintels	28

**Irish Standard – British Standard – European Normative APPROVED PRODUCT**

BAT Metalwork is Ireland's leading manufacturer of Stainless Steel Wall Ties.

Independently Tested to meet Irish/UK/European Standards using couplet test method IS EN 846-5:2012, complying with IS EN845-1:2013 +A1:2016.

- Traceable Batch numbers allowing us to date production back to our Tipperary plant.
- Heat No allows us to trace raw materials back to our suppliers.
- DOP Link provides an instant copy of Declaration of Performance certificate.
- QR Code printed on all bags with all relevant information.
- All Raw Material is continuously tested to ensure the highest level of quality is maintained.

10



Doc. No. 005 Rev 02

*Product Information*

**225 Wall Tie With Star. Suitable for cavity width 76mm to 100mm**

Traceable Batch: 20191202-156      Heat No: 3T52632

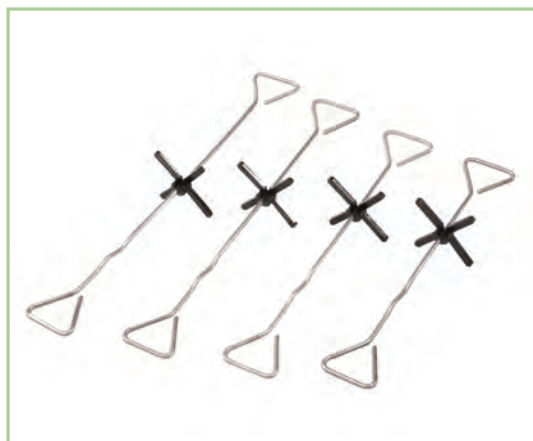
D.O.P.: <https://bit.ly/54BtL891>

**Quantity: 30**

Design Advantages:

- 1 Tangle Free
- 2 Snag Free – Limiting Injury
- 3 Insulation disc pre-assembled
- 4 Stainless Steel
- 5 Thermal Conductivity 16 W/m\* C (25\*)

**WALL TIES (3.5mm Diameter)**

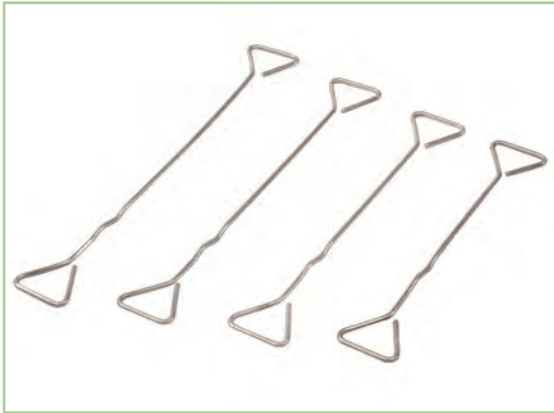


The Bat Metalwork Double Triangle Wall Ties (with retaining clip) are stainless steel ties that provide support between the outside and inner walls and prevents water passing across the cavity. The design of the tie means it can be installed either way up. This wall tie can come with or without star.

**30 Ties per bag**

Length	225mm	250mm	275mm	300mm
<b>WITH STAR</b>	BWT225STDWS	BWT250STDWS	BWT275STDWS	BWT300STDWS
<b>NO STAR</b>	BWT225STDND	BWT250STDND	BWT275STDND	BWT300STDND

## HEAVY DUTY WALL TIE (4.5mm Diameter)



Heavy-duty wall tie, designed to be used in high rise, public and commercial buildings.

4.5mm wire as opposed to 3.5mm

**50 Ties per bag**

Length	225mm	250mm	275mm	300mm	325mm	350mm	375mm	400mm
<b>NO STAR</b>	BWTHD225	BWTHD250	BWTHD275	BWTHD300	BWTHD325	BWTHD350	BWTHD375	BWTHD400

## WALL TIE DISC



Quantity - Bag 250

**Code**

Round Disc

## FRAME CRAMP



Frame Cramp – A Stainless Steel Frame cramp is L-shaped wall tie, typically used when connecting structures at a right angle to each other, house extensions etc. It is also used for connecting stone facing or cladding to an existing building.

A v-drip is added to the frame cramp to prevent moisture travelling from outer to inner walls.

GALVANISED IS FOR INTERNAL USE ONLY

**250 per box**

Size	100 X 50mm	125 X 50mm	150 X 50mm	175 X 50mm	200 X 50mm	225 X 50mm	250 X 50mm	275 X 50mm	300 X 50mm
<b>STAINLESS</b>	FCSS10050	FCSS12550	FCSS15050	FCSS17550	FCSS20050	FCSS22550	FCSS25050	FCSS27550	FCSS30050
<b>GALVANISED</b>	FCGAL100	FCGAL125	FCGAL150		FCGAL200				

**MOVEMENT TIE**



Heavy duty wall tie with plastic movement sleeve to allow for expansion.

**100 per box**

<b>Length</b>	<b>200mm</b>
	MT200

**DEBONDING SLEEVES**



Debonding sleeves are used on plain-ended wall ties at vertical movement joints in a run of brickwork or blockwork. They should be installed with a 10mm gap at the end to allow for expansion of the masonry.

<b>Size</b>	<b>150mm</b>
	DS150mm

**TIMBER FRAME TIE**



Stainless Steel Timber frame wall tie used to connect brick or block work to timber frame buildings.

<b>Timber Frame Tie</b>	TFT50
-------------------------	-------

## WALL STARTER

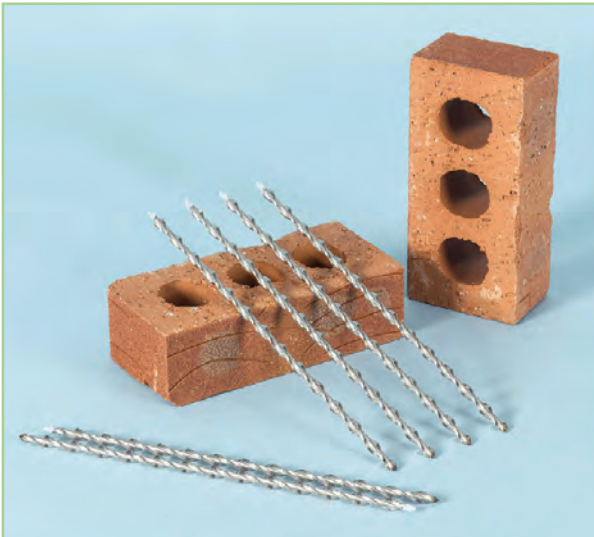


Stainless Steel Wall Starter Kit to connect new wall to existing wall.

**10 units per box**

<b>Mult-Starter-Stainless Steel</b>	MSSS
-------------------------------------	------

## REMEDIAL WALL TIES



Remedial wall ties have longitudinal blades with sufficient reactive interface angle to cut an accurate self tapping penetrative path into a wide variety of masonry elements upon being driven by a series of axial impacts.

Suitable for Cavities 75mm to 150mm

**\*\*AVAILABLE UPON REQUEST\*\***

## EXPANDED METAL ROLL



For use primarily as anti-cracking reinforcement (brick reinforcing) in the construction of brick and block masonry.

The mesh is laid in strips between brick or block courses leaving approximately 25mm clearance from the faces of the work

<b>Expanded Metal Roll 100mm</b>	EMR100
<b>Expanded Metal Roll 175mm</b>	EMR175
<b>Expanded Metal Roll 225mm</b>	EMR225
<b>Expanded Metal Roll 300mm</b>	EMR300

**SPEEDY**



Timber to Timber Connector. Designed to carry timber at both sides of a block wall.

**\*Please note box quantity in brackets**

	44mm	47mm	50mm	75mm	92mm	100mm
<b>MINOR</b>	SPMIN44 (100)		SPMIN50 (100)			
<b>STANDARD</b>	SPSTD44 (100)		SPSTD50 (100)	SPSTD75 (100)	SPSTD92 (100)	SPSTD100 (100)
<b>LONG LEG</b>		SPLL47 (30)	SPLL50 (30)	SPLL75 (30)	SPLL92 (30)	SPLL100 (30)

**JOIST HANGER**



Traditional timber to masonry hanger range for building into brickwork or blockwork. All Hangers require 675 mm (3 courses) of Masonry above. The masonry must be cured for 28 days prior to loading the floor.

*If ordering a Joist Hanger: 150mm depth and 75mm width, Code = JH15075*

**\*Please note box quantity in brackets**

Depth X Width	39mm	46mm	50mm	75mm	92mm	100mm	150mm
<b>150mm</b>	JH15039 (24)	JH15046 (20)		JH15075 (20)			
<b>175mm</b>		JH17546 (20)		JH17575 (20)		JH175100 (20)	
<b>225mm</b>	JH22539 (18)	JH22546 (16)	JH22550 (16)	JH22575 (12)	JH22592 (12)	JH225100 (12)	JH225150 (12)



## JOIST HANGER WITH RETURN

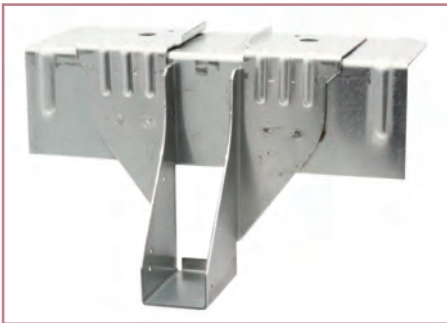


Returns available to suit 100mm block work only.

**\*Please note box quantity in brackets**

Depth X Width	39mm	46mm	75mm	92mm	100mm
225mm	JHR22539100 (16)	JHR22546100 (12)	JHR22575100 (10)	JHR22592100 (10)	JHR225100100 (12)

## RAPID BUILD



Rapid Build combines the standard joist hanger with a reinforced top plate to provide a superior level of performance. No masonry is required above the hanger.

The masonry supporting the hanger must be cured for 3 days prior to loading the floor.

**\*Please note box quantity in brackets**

Depth X Width	39mm	75mm	100mm	125mm	150mm
225mm	RBH39225 (8)	RBH22575 (8)	RBH225100 (8)	RBH225125 (8)	RBH225150 (8)

## MAXI



Maxi is designed to support timber to timber connections in medium to high load situations. External and internal flange options allow for multifunctional use.

**\*Please note box quantity in brackets**

Depth X Width	39mm	46mm	50mm	75mm	92mm	100mm	150mm
380mm		MHE38046 (30)		MHE38075 (30)		MHE380100 (30)	MHE380150 (30)
490mm	MHE49039 (30)	MHE49046 (30)	MHE49050 (30)	MHE49075 (30)	MHE49092 (30)	MHE490100 (30)	MHE490150 (30)
620mm		MHE62046 (30)					

**\*\*OTHER SIZES AVAILABLE UPON REQUEST\*\***

**VERTICAL AND HORIZONTAL STRAPS**



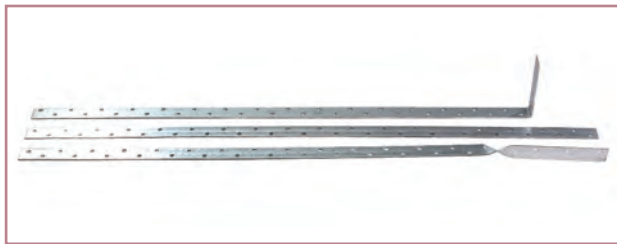
**Vertical Strap** available in Straight, Bent or Twist **(25 per bundle)**. BAT straps are manufactured to provide vertical restraint against wind pressure and uplift forces.

*If ordering a Standard Strap: 1000mm straight. Code = STDSTRAP1000S*

Vertical (LD)	Straight	Bent	Twist
<b>600mm</b>	STDSTRAP600S	STDSTRAP600B	STDSTRAP600T
<b>900mm</b>	STDSTRAP900S	STDSTRAP900B	STDSTRAP900T
<b>1000mm</b>	STDSTRAP1000S	STDSTRAP1000B	STDSTRAP1000T
<b>1200mm</b>	STDSTRAP1200S	STDSTRAP1200B	STDSTRAP1200T
<b>1500mm</b>		STDSTRAP1500B	
<b>1600mm</b>		STDSTRAP1600B	

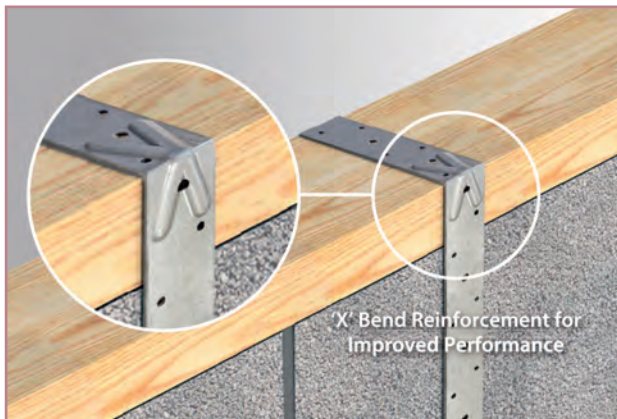


**Horizontal Strap** available in Straight, Bent or Twist **(10 per bundle)**. BAT Heavy Duty straps are manufactured to provide horizontal restraint against wind pressure and uplift forces.



Horizontal (HD)	Straight	Bent	Twist
<b>600mm</b>	HDSTRAP600S	HDSTRAP600B	HDSTRAP600T
<b>900mm</b>	HDSTRAP900S	HDSTRAP900B	HDSTRAP900T
<b>1000mm</b>	HDSTRAP1000S	HDSTRAP1000B	HDSTRAP1000T
<b>1200mm</b>	HDSTRAP1200S	HDSTRAP1200B	HDSTRAP1200T
<b>1500mm</b>	HDSTRAP1500S	HDSTRAP1500B	
<b>1600mm</b>	HDSTRAP1600S	HDSTRAP1600B	
<b>1800mm</b>	HDSTRAP1800S	HDSTRAP1800T	
<b>2000mm</b>	HDSTRAP2000S		

**PREFORMED STRAP**



Engineered strap that has been designed to provide improved performance

	Code
<b>1500mm Bent</b>	PFS1500100B

## HERRINGBONE JOIST STRUTS



Available in several Lengths. Used As An Alternative To Timber Strutting, these Joist Struts Offer Lateral Support To Floor Joists. **\*Please note box quantity in brackets**

	Code
<b>400mm</b>	JS400 (100)
<b>450mm</b>	JS450 (50)
<b>600mm</b>	JS600 (50)

## GALVOBAND



Splice plates are used for the butt jointing of timbers with similar cross section. Normally used to replace rotten or burnt timbers.

	Code
<b>Galvo Band Rolls 20mm</b>	GALB20
<b>Galvo Band Rolls 25mm</b>	GALB25
<b>Galvo Band Rolls 50mm</b>	GALB50

## TIMBER CONNECTORS



Timber connectors enhance the bolt performance in timber when placed on the bolt that goes through the wood.

Single Side Timber/Connector	Code
<b>63mm</b>	SSTC63
<b>75mm</b>	SSTC75

Double Side Timber/Connector	Code
<b>50mm</b>	DSTC50
<b>63mm</b>	DSTC63
<b>75mm</b>	DSTC75

## SPLICE PLATE



Splice plates are used for the butt jointing of timbers with similar cross section. Normally used to replace rotten or burnt timbers.

	Code
<b>Splice Plate L61</b>	SPL61
<b>Splice Plate L80</b>	SPL80
<b>Splice Plate L98</b>	SPL98

## ADJUSTABLE ANGLE BRACKET



A galvanised 90 degree connector available in a range of sizes with two slots and multi-hole pattern designed for easy adjustment.

Size (mm)	Code
<b>100 x 55 x 30mm</b>	AAB50
<b>120 x 55 x 30mm</b>	AAB70
<b>50 x 55 x 30mm</b>	AAB100
<b>70 x 55 x 30mm</b>	AAB120

## ANGLE BRACKETS

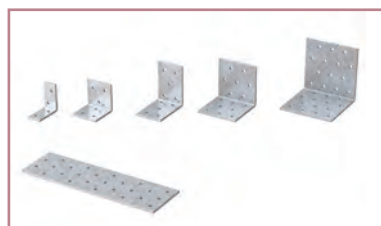


Length x Width x Height, sold per bracket.

Light Duty	Code
<b>60 x 40 x 60mm</b>	ABLD604060

Heavy Duty	Code
<b>150 x 90 x 63mm</b>	ABHD1509063
<b>150 x 150 x 63mm</b>	ABHD15015063
<b>60 x 60 x 40mm</b>	ABHD606040
<b>90 x 45 x 40mm</b>	ABHD904540
<b>90 x 90 x 63mm</b>	ABHD909063
<b>50 x 50 x 60mm</b>	ABHD505060
<b>60 x 40 x 60mm</b>	ABHD604060

## ANGLE PLATE



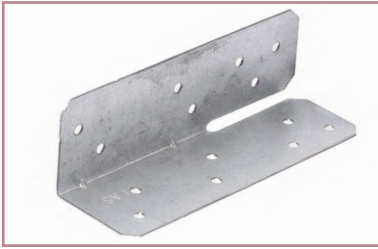
A versatile range of 2.5mm thick galvanised brackets and plates, suitable for nail or screw fixing, used to strengthen timber joints.

Angle Plates are used to connect timber joists to purlins.

Size (mm)	Code
<b>40 x 40 x 40mm (each)</b>	AP444
<b>60 x 60 x 40mm (each)</b>	AP664
<b>300 x 30mm (Box 100)</b>	AP30030



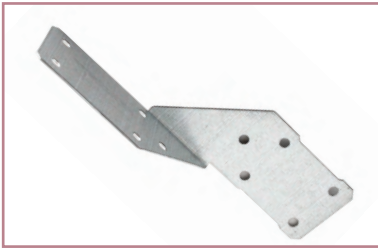
## FRAMING ANCHOR



Framing Anchors provide strong mechanical joints for framing timbers

**Framing Anchor Type C**

**FAC**



**Framing Anchor**

**TA-1**

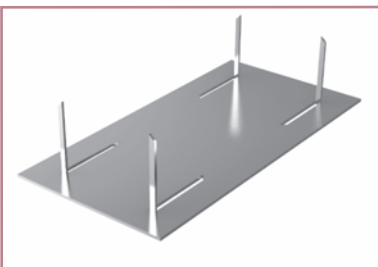
## FLAT CONNECTOR PLATES



A range of pre-punched flat connectors suitable for many timber to timber, masonry or steel applications. Manufactured from 2.5mm thick galvanised steel as standard.

WIDTH (mm)	LENGTH (mm)	CODE
60	180	ABFCP60180

## SAFEPLATE



Secured to timber studding by use of pre-punched spikes, to protect plumbing and electrical wiring against random nailing.

200 per box.

WIDTH (mm)	LENGTH (mm)	CODE
54	90	SPL54

**GALVANISED CHAINLINK**



Heavily Galvanised Chainlink fencing is a multi-purpose fencing solution. 900-1800mm available in 25m rolls. 2400mm available in 12.5m rolls.

*Example: Galvanised Chainlink: 900mm height and 2mm diameter. 25m in length. Code = GCL9002 (H x D)*

	<b>2mm</b>	<b>2.5mm</b>
<b>900mm</b>	GCL9002	GCL9002.5
<b>1200mm</b>	GCL12002	GCL12002.5
<b>1500mm</b>	GCL15002	GCL15002.5
<b>1800mm</b>	GCL18002	GCL18002.5
<b>2400mm</b>		GCL24002.5

**PVC CHAINLINK**



PVC Coated Chainlink fencing is a multi-purpose fencing solution. 900-1800mm available in 25m rolls. 2400mm available in 12.5m rolls.

*Example: PVC Chainlink: 900mm height and 2.5mm diameter. 25m in length. Code = PVCCL9002.5 (H x D)*

	<b>2.5mm</b>	<b>3.15mm</b>
<b>900mm</b>	PVCCL9002.5	PVCCL9003.15
<b>1200mm</b>	PVCCL12002.5	PVCCL12003.15
<b>1300mm</b>		PVCCL13003.15
<b>1500mm</b>	PVCCL15002.5	PVCCL15003.15
<b>1800mm</b>	PVCCL18002.5	PVCCL18003.15
<b>2400mm</b>		PVCCL24003.15

**GAUGE GUIDE**

- 1.60mm = 16 GAUGE
- 2.00mm = 14 GAUGE
- 2.50mm = 12 GAUGE
- 3.15mm = 10 GAUGE
- 4.00mm = 8 GAUGE

## WELD MESH



Weld Mesh is used to build protective enclosures.

*Example: Weld Mesh 900mm height, 13mm mesh and 1mm diameter. 6m in length. Code = WMG9001316M (H x M x D x L)*

### 6m Roll

	Ø 1mm			Ø 1.6mm			Ø 2mm		
	13mm	25mm	50mm	13mm	25mm	50mm	13mm	25mm	50mm
900	WMG9001316M	WMG9002516M		WMG900131.66M	WMG900251.66M	WMG900501.66M			
1200		WMG12002516M			WMG1200251.66M				

### 30m Roll

	Ø 1mm			Ø 1.6mm			Ø 2mm		
	13mm	25mm	50mm	13mm	25mm	50mm	13mm	25mm	50mm
900	WMG90013130M	WMG90025130M		WMG900131.630M	WMG900251.630M	WMG900501.630M			WMG90050230M
1200		WMG120025130M			WMG1200251.630M				WMG120050230M
1500					WMG1500251.630M				WMG150050230M
1800					WMG1800251.630M				WMG180050230M

## PVC WELD MESH



Used for Chicken Runs, Dogs Runs, Bird Cages etc.

*Example: PVC Weld Mesh 900mm height, 25mm mesh and 1mm diameter. 30m in length. Code = WMP90025130M (H x M x D x L)*

### 30m Roll

	Ø 1mm			Ø 1.6mm			Ø 2mm		
	13mm	25mm	50mm	13mm	25mm	50mm	13mm	25mm	50mm
900		WMP90025130M			WMP900251.630M	WMP900501.630M		WMP90025230M	
1200		WMP120025130M			WMP1200251.630M			WMP120025230M	WMP120050230M

**HEX WIRE/CHICKEN WIRE**



Fencing product that can be used for chicken wire or garden fences etc. Available in 10 and 50 meter rolls.

Example: Hex Wire: 900mm height and 25mm mesh. 50m in length. Code = HWN9002550

**10M**

	13mm	25mm	50mm
<b>600mm</b>	HWN6001310	HWN6002510	HWN6005010
<b>900mm</b>	HWN9001310	HWN9002510	HWN9005010
<b>1200mm</b>	HWN12001310	HWN12002510	HWN12005010
<b>1500mm</b>	HWN15001310	HWN15002510	HWN15005010
<b>1800mm</b>	HWN18001310	HWN18002510	HWN18005010

**50M**

	13mm	25mm	50mm
<b>600mm</b>	HWN6001350	HWN6002550	HWN6005050
<b>900mm</b>	HWN9001350	HWN9002550	HWN9005050
<b>1200mm</b>	HWN12001350	HWN12002550	HWN12005050
<b>1500mm</b>	HWN15001350	HWN15002550	HWN15005050
<b>1800mm</b>	HWN18001350	HWN18002550	HWN18005050

**FIELD FENCING**



Extra-strong net, especially designed for the protection of hunting areas, forest reserves, motorways and, whenever necessary, highly resistant fencing.

The horizontal wires measuring 2.50mm have a high carbon content, ensuring great rigidity combined with the natural flexibility of this alloy.

Its special knots twists around the horizontal and vertical wires, making these wires totally fixed.

	600mm	800mm	900mm	1200mm	1290
<b>Light Duty</b>	FFL56015		FFL69015	FFL1012015	FFL1012915
<b>Medium Duty</b>		FFC88015	FFC69015		
<b>High Tensile</b>		FFHT88015			

**BARBED WIRE**



Used in a variety of situations from construction to animal fencing situations. Available in Galvanised, Green Galvanised and High Tensile. 200m Rolls

Type	Code
<b>Galvanised</b>	BWFG
<b>Green Galv 4"/2.5mm</b>	BWFGG
<b>High Tensile 1.6mm</b>	BWHT1.6
<b>High Tensile 2mm</b>	BWHT2



## LINE WIRE



High strength steel line wire for tensioning metal fences and is generally used for electric fencing, giving a perfect taut.

Size	1.6mm	2.00mm	2.5mm		3.15mm		4.00mm
Guage	16	14	12	12	10	10	8
Weight/Length	2.5Kg	2.5Kg	400m	25Kg	280m	25Kg	190m
Code	LW1.62.5	LW22.5	LW2.5400	LW2.525	LW3.15280	LW3.1525	LW4190

## HIGH TENSILE LINE WIRE

Size	2.5mm
Guage	10
Weight/Length	25kg
Code	LWHT2.525

### GAUGE GUIDE

1.60mm = 16 GAUGE  
 2.00mm = 14 GAUGE  
 2.50mm = 12 GAUGE  
 3.15mm = 10 GAUGE  
 4.00mm = 8 GAUGE

## PVC LINE WIRE



Plastic Coated Line Wire perfect for supporting fencing such as chain link fencing between posts. It is coated in PVC meaning smooth, rounded edges that do not cut workers' hands or wire installation and are comfortable to work with.

Size (Ext/Int)	2.5mm/1.7mm		3.15mm/2.24mm		4mm/2.7mm
Guage	12	12	10	10	8
Weight/Length	2.5Kg	700Kg	2.5Kg	300m	280m
Code	PVCLW2.52.5	PVCLW2.5700	PVCLW3.152.5	PVCLW3.15300	PVCLW4280

## TYING WIRE



Tying wire used for tying chainlink fencing to line wire. Can be used for electric fencing and in wire straining

Size	1.6mm
Guage	16
Weight/Length	20Kg
Code	BATW

## WIRE BAG TIES



Bag tie twister used for securing tops of bags

Size	12mm	150mm	175mm	225mm	300mm
Black Annealed 2mm	BT125	BT150	BT175	BT225	BT300
Bag Tie Twister	BTT				

## WIRE STRAINER RACHET



Used with a concrete or wooden fence post to have a simple strain and locking by the cam and ratchet system.

Code	WS
------	----

**POWAPOST® CUBE**



A galvanised landscaping wire gabion manufactured from 3mm diameter 50x50mm mesh, hot dipped galvanised for superior durability and corrosion protection.

Size	Code
<b>300 x 300 x 300mm</b>	GAB300300
<b>300 x 300 x 600mm</b>	GAB300600
<b>450 x 450 x 450mm</b>	GAB450450
<b>450 x 450 x 600mm</b>	GAB450600

**DRIVE-IN FENCE POST SPIKE**



The Twin Bolt arrangement mechanically tightens around the post allowing easy removal of damaged or rotten posts.

Galvanized are sold in pairs, powder coated are sold as single items.

Size	Code
<b>75 x 75mm 24" Side Bolt Spike Galv (Pair)</b>	MET324SP
<b>100 x 100mm 30" Side Bolt Spike Galv (Pair)</b>	MET430SP
<b>Drive-In Post Spike (Twin Bolt) 100 x 100 x 750mm Powder Coated</b>	METPC100750
<b>Drive-In Post Spike (Twin Bolt) 75 x 75 x 600mm Powder Coated</b>	METPC75600
<b>Drive-In Post Spike (Twin Bolt) 75 x 75 x 750mm Powder Coated</b>	METPC75750

**DRIVING IN TOOL**

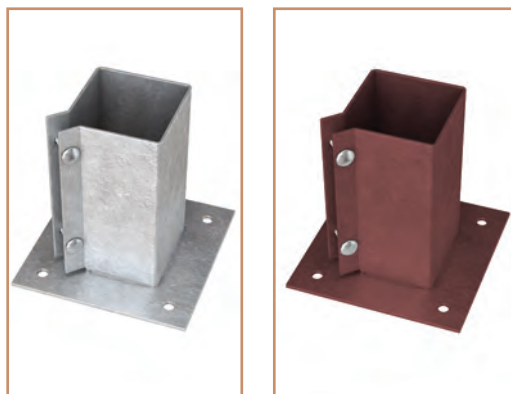


This robust universal tool is designed to aid installation of Post Spikes, to protect the shoe whilst hammering into the ground. The PowaPost® Driving Tool should always be used when installing Post Spikes.

DT75 is also suitable for 100 x 100mm spikes.

Size	Code
<b>75 x 75mm</b>	METDT

## BOLT DOWN POST SHOE



The PowaPost® Bolt Down Shoe is designed for use when posts are required to be installed on an existing hard surface such as a concrete or wooden base. Hot dip galvanised after fabrication for superior corrosion resistance. Ideally suited to coastal areas.

Pack Quantity 2

Size	Code
<b>75 x 75mm Galv (Pair)</b>	MET3BD
<b>100 x 100mm Galv (Pair)</b>	MET4BD
<b>75 x 75mm Powder Coated</b>	METPCBD75
<b>100 x 100mm Powder Coated</b>	METPCBD100

## CONCRETE-IN POST SHOE



Designed for use when soil conditions are unsuitable for drive-in spikes.

Size	Code
<b>75 x 75mm</b>	METPCS75
<b>100 x 100mm</b>	METPCS100

## POST SUPPORT



Heavy duty welded bracket (75 x 75mm with 220mm stem), designed to be set into concrete. To secure garden sleepers, posts for gazebos, carports and shelters. Not suitable for fencing.

Size	Code
<b>75 x 75mm</b>	METPCSS75

## REPAIR SPIKE



The PowaPost® repair spike is a sturdy welded shoe which provides an easy solution to broken or rotted timber posts that have been previously set into concrete. Perfect for repairing storm damaged fencing, the repair spike is installed quickly, eliminating the need to remove the existing concrete and without the need for digging or additional concreting.

Size	Code
<b>75 x 75mm</b>	METPCRS75
<b>100 x 100mm</b>	METPCRS100

**ARRIS RAIL BRACKETS**



For use with feather edge fencing, this galvanized bracket secures arris rails to posts.

Size	Code
<b>225mm</b>	METRB225
<b>300mm</b>	METRB300

**LONG ROLL PIN**



A Sturdy galvanized steel pin, designed to be driven into soil to secure log border roll. Simply insert the pin into the soil and nail or screw through the pre-punched holes into the timber.

Size	Code
<b>450mm</b>	LRP450

**PANEL CLIP**



A galvanized fixing used to securely attach fence panels to posts reducing the risk of nail damage to timber.

Box Quantity 100

Size	Code
<b>44mm</b>	METPCL44
<b>50mm</b>	METPCL50

## PANEL SECURITY BRACKET



Designed to secure fence panels to 4" concrete posts. An economical, easy to fix bracket to help prevent unwanted removal or theft.

10 per pack

Size	Code
100mm	METSB100

## POWAGUARD™ GROUND STAPLES



Galvanised steel ground staples used to secure weed/ground control fabric to the ground. Supplied in retail bags of 50 pieces.

50 per pack

Size	Code
25 x 150mm	METGS25120
100 x 150mm	METGS100150

**BRIGHT ROUND WIRE**



Bright nails are self coloured and have no plating. Suitable for a wide variety of applications. Commonly used to secure flooring, roofing, heavy duty fencing, partitions etc

**\*Please note pack quantity in brackets**

	<b>1KG TUB (10)</b>	<b>2.5KG TUB (4)</b>	<b>5KG TUB (4)</b>	<b>10KG TUB (1)</b>	<b>20KG BOX (1)</b>
<b>25 x 2.00mm</b>	RWN251				RWN2520
<b>40 x 2.65mm</b>	RWN401				RWN4020
<b>50 x 3.35mm</b>	RWN501	RWN502.5	RWN505	RWN5010	RWN5020
<b>65 x 3.35mm</b>	RWN651	RWN652.5	RWN655	RWN6510	RWN6520
<b>75 x 4.00mm</b>	RWN751	RWN752.5	RWN755	RWN7510	RWN7520
<b>100 x 4.50mm</b>	RWN1001	RWN1002.5	RWN1005	RWN10010	RWN10020
<b>125 x 5.60mm</b>	RWN1251	RWN1252.5			RWN12520
<b>150 x 6.00mm</b>	RWN1501	RWN1502.5			RWN15020

**GALV ROUND WIRE**



Galvanised. Corrosion-resistant. Suitable for general construction applications.

**\*Please note pack quantity in brackets**

	<b>1KG TUB (10)</b>	<b>2.5KG TUB (4)</b>	<b>5KG TUB (4)</b>	<b>10KG TUB (1)</b>	<b>20KG BOX (1)</b>
<b>40 x 4.65mm</b>		GRN402.5			
<b>50 x 3.35mm</b>	GRN501	GRN502.5	GRN505	GRN5010	GRN5020
<b>65 x 3.35mm</b>	GRN651	GRN652.5	GRN655	GRN6510	GRN6520
<b>75 x 4.00mm</b>	GRN751	GRN752.5	GRN755	GRN7510	GRN7520
<b>100 x 4.50mm</b>	GRN1001	GRN1002.5	GRN1005	GRN10010	GRN10020
<b>125 x 4.50mm</b>					GRN12520
<b>150 x 4.50mm</b>					GRN15020

**SQ TWIST**



Coated nail used commonly for joist hangers and restraint straps. This multipurpose twisted nail has a galvanised, rust resistant finish.

**\*Please note pack quantity in brackets**

	<b>1KG TUB (10)</b>	<b>2.5KG TUB (4)</b>	<b>5KG TUB (4)</b>	<b>10KG TUB (1)</b>	<b>20KG BOX (1)</b>
<b>30 x 3.75mm</b>	STN301	STN302.5	STN305	STN3010	STN3020

## PASSIVATED



Passivated Nail is a ribbed nail that is used for attaching plasterboard to ceilings and attaching cladding in a tough environment.

**\*Please note pack quantity in brackets**

	1KG TUB (10)	2.5KG TUB (4)	5KG TUB (4)	10KG TUB (1)	20KG BOX (1)
<b>30 x 2.65mm</b>	YPSN301	YPS302.5	YPSN305		YPS3020
<b>40 x 2.65mm</b>	YPSN401	YPS402.5	YPSN405		YPS4020

## FELT (ELH)



Felt nail used in the fixing of shed and mineral felts to timber or plywood.

**\*Please note pack quantity in brackets**

	1KG TUB (10)	2.5KG TUB (4)	5KG TUB (4)	10KG TUB	20KG BOX (1)
<b>20 x 3.00mm</b>	FN201	FN202.5	FN205		FN2020

## OVAL NAIL



For usage, in kitchens or in a scenario where detail is key and appearance is important. The oval head of this nail reduces the risk of splitting the timber when driven in the same direction of the wood grain.

**\*Please note pack quantity in brackets**

	1KG TUB (10)	2.5KG TUB (4)	5KG TUB (4)	10KG TUB	20KG BOX (1)
<b>40 x 2.65mm</b>	ON401	ON402.5	ON405		ON4020
<b>50 x 3.35mm</b>	ON501	ON502.5			ON5020
<b>65 x 4.00mm</b>	ON651				ON6520
<b>75 x 5.00mm</b>	ON751				ON7520

## GALVANISED OVAL



For usage, in kitchens or in a scenario where detail is key and appearance is important. The oval head of this nail reduces the risk of splitting the timber when driven in the same direction of the wood grain. Galvanised Nail.

**\*Please note pack quantity in brackets**

	1KG TUB (10)	2.5KG TUB	5KG TUB	10KG TUB	20KG BOX (1)
<b>40 x 2.65mm</b>	GON401				GON4020
<b>50 x 3.35mm</b>	GON501				GON5020
<b>65 x 4.00mm</b>	GON651				GON6520
<b>75 x 5.00mm</b>					GON7520

### GALVANISED DRIVE SCREW



Galvanised Drive screws are a nail with a screw like thread for fixing corrugated sheeting to timber.

**\*Please note pack quantity in brackets**

	<b>1KG TUB (10)</b>	<b>2.5KG TUB (4)</b>	<b>5KG TUB (4)</b>	<b>10KG TUB</b>	<b>20KG BOX (1)</b>
<b>65 x 5.60mm</b>	GDS651				GDS6520
<b>75 x 5.60mm</b>	GDS751	GDS752.5	GDS755		GDS7520
<b>100 x 5.60mm</b>	GDS1001	GDS1002.5	GDS1005		GDS10020
<b>125 x 5.60mm</b>	GDS1251				GDS12520

### PANEL PIN



Galvanised panel pins for securing light panels.

<b>20mm x 17g</b>	PP20
<b>25mm x 17g</b>	PP25
<b>30mm x 17g</b>	PP30
<b>40mm x 17g</b>	PP40

### SPRING HEAD NAIL



The Spring Head Nail is most commonly used for the application of galvanised sheeting onto timber frame. This nail allows for some structural movement without losing any strength. Spring head nails have a spring head washer.

**\*Please note pack quantity in brackets**

	<b>1KG TUB (10)</b>	<b>10KG TUB (1)</b>
<b>65 X 3.35mm</b>	SHN651	SHN6510

### STAINLESS STEEL NAIL



Stainless Steel Nails are designed for external applications and offer superior corrosion resistance compared to standard galvanised nails.

<b>Stainless Steel Nail 30 x 2.65mm</b>	SSNAIL302.65
<b>Stainless Steel Ring Shank 30 x 2.65mm</b>	SSNAILRS302.65



## GALVANISED STAPLES (MECH GALV)



Galvanised staples are used primarily for connecting wire to timber. Fencing, barbed, line wire etc.

**\*Please note pack quantity in brackets**



	1KG TUB (10)	2.5KG TUB (4)	5KG TUB	10KG TUB	20KG BOX
20 x 2mm	GS201	GS202.5		GS2010	GS2020
30 x 3.55mm	GS301	GS302.5		GS3010	GS3020
40 x 4mm	GS401	GS402.5	GS405	GS4010	GS4020
40 x 4mm (BARBED)			GS405B	GS4010B	-
50 x 4mm	GS501	GS502.5	GS505		GS5020

## FLOOR BRADS



Flooring Brad Nails 65mm - Steel flooring brads are most commonly used to nail floor boards. The L shaped head reduces damage to the floorboards when being fixed in place and also allows for an easy removal of the boards if necessary.

**\*Please note pack quantity in brackets**

	1KG TUB (10)	20KG BOX (1)
65 X 3mm	FB651	FB6520

## HD SLATE (HOT DIPPED)



Alternative to copper nails and is used for fixing slates to timber. This multipurpose nail has a galvanised, rust resistant finish.

**\*Please note pack quantity in brackets**

	1KG TUB (10)	2.5KG TUB (4)	5KG TUB (4)	10KG TUB	20KG BOX (1)
40 x 3.35mm	SN403.351	SN403.352.5	SN403.355		SN403.3520
50 x 3.35mm	SN503.351	SN503.352.5	SN503.355		SN503.3520
65 x 3.35mm	SN653.351	SN653.352.5	SN653.355		SN653.3520
75 x 3.35mm	SN753.751	SN753.352.5			SN753.7520

### HD CLOUT (HOT DIPPED)



Perfect for usage in line with the application of felt on roofing and roof slates, where strength is required. This nail has a galvanised, rust resistant finish.

**\*Please note pack quantity in brackets**

	1KG TUB (10)	2.5KG TUB (4)	5KG TUB (4)	10KG TUB (1)	20KG BOX (1)
<b>30 x 2.65mm</b>	SN302.651	SN302.652.5	SN302.655	SN302.6510	SN302.6520
<b>40 x 2.65mm</b>	SN402.651	SN402.652.5	SN402.655		SN402.6520
<b>50 x 2.65mm</b>	SN502.651	SN502.652.5	SN502.655		SN502.6520

### RING SHANK



Used on the application of roof shingles, shakes and cladding.

**\*Please note pack quantity in brackets**

	1KG TUB (10)	2.5KG TUB	5KG TUB	10KG TUB	20KG BOX (1)
<b>25 x 2.00mm</b>	RSN251				RSN2520
<b>40 x 2.65mm</b>	RSN401				RSN4020
<b>50 x 2.65mm</b>	RSN501				RSN5020
<b>65 x 3.35mm</b>	RSN651				RSN6520

### ALUMINIUM NAIL



Generally used in roofing to provide a more secure connection.

	BOX (1000)
<b>40mm</b>	AN40
<b>45mm</b>	AN45
<b>50mm</b>	AN50
<b>60mm</b>	AN60
<b>65mm</b>	AN65
<b>70mm</b>	AN70

## COPPER NAIL



Copper nails provide a stronger solution to copper crampions. These nails also have a rust resistant finish for added longevity.

	BOX (1000)	BOX (1000)
<b>30 x 2.65mm</b>	CN302.65	CN303.35
<b>35 x 3.35mm</b>		CN353.35
<b>40 x 3.35mm</b>		CN403.35
<b>50 x 3.35mm</b>		CN503.35
<b>CRAMPIONS</b>	CC	

## SLATER TUB



Slaters Tub is combined of stainless steel nails and copper crampions to fix 1000 slates, making it a cost effective, convenient pack for roofers.

1000 Copper Crampions  
2000 Stainless Steel Nail

<b>Slater Tub Nail (Ring Shank)</b>	SLTN
<b>Slater Tub Nail (Plain Shank)</b>	SLTNPL

## POINT HOOKS



Slate Hook is used for fixing natural slate. It provides excellent resistance to wind lift and negates the necessity to punch slate holes. It reduces labour and slate wastage and makes it easier to remove or replace damaged slates.

<b>110mm Black SS Point Hooks</b>	PH110
-----------------------------------	-------

## RIDGE TILE NAIL



Used to fix ridge tiles to steel roof material.

<b>Ridge Tile Nail 110mm</b>	RTNAIL110
<b>Ridge Tile Nails 75mm</b>	RTNAIL75

## DAMP PROOF COURSING (DPC)

Damp-proof courses also known as DPCs are protective barriers inserted into the building's structure above ground level. Applied horizontally they are designed to prevent damp caused by moisture rising from the ground and into the structure of the building. Applied vertically they stop water from moving sideways through a building's walls

	<b>CODE</b>	<b>ROLLS PER OUTER</b>
<b>100mm</b>	DPC100	9
<b>150mm</b>	DPC150	6
<b>225mm</b>	DPC225	4
<b>300mm</b>	DPC300	3
<b>337.5mm</b>	DPC337.5	3
<b>375mm</b>	DPC375	3
<b>450mm</b>	DPC450	2
<b>600mm</b>	DPC600	2
<b>900mm</b>	DPC900	1



## BUILDERS FILM (DPM)

Damp-proof membrane is used to protect buildings from moisture by creating a damp resistant barrier. Commonly used to protect a buildings concrete slab from moisture rising from the foundations, damp-proof membrane is a versatile product and can be used for a wide range of applications such as creating a protective surface before laying laminate or wood floors.

<b>1200g</b>	BUF1200
<b>1000g</b>	BUF1000
<b>500g</b>	BUF500
<b>500g Clear</b>	BUF500CL





Keystone are Ireland's leading manufacturer of Structural Steel Lintels.

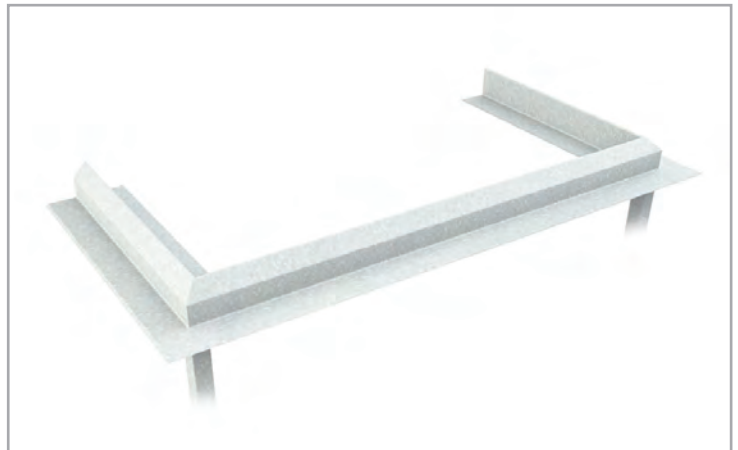
Keystone offer a bespoke design service supported by:

- 1 Engineering Experts
- 2 Rapid Response Technical Advisory Service
- 3 Structural Calculation Provided
- 4 Free Onsite Consultation

Contact BAT Metalwork for any Lintel requirements.

### **SQUARE BAY LINTEL**

A square bay lintel is the ideal solution for a square bay window with 90 degree corners.



### **FULL ARCH LINTEL**



## SEGMENTAL ARCH LINTEL

A segmental arch lintel is an arch with a circular arc of less than 180 degrees



## APEX LINTEL

Apex lintels are ideal for triangular openings above doors and windows.



## HALF APEX LINTEL



**CORNER LINTEL  
STANDARD DUTY**

A corner lintel helps architects to achieve a continuous window opening on two perpendicular walls.



**CORNER LINTEL  
HEAVY DUTY**





# Notes

# Notes

# Notes



# BAT METALWORK



Galtee Valley Enterprise Park,  
Ballylanders, Co. Limerick

Tel: +353 62 46290

E: [info@batmetalwork.com](mailto:info@batmetalwork.com)

[www.batmetalwork.com](http://www.batmetalwork.com)

BAT  
LIMTEL ANGLE  
LENGTH 750